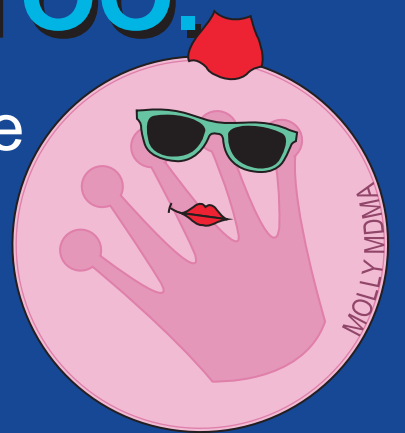


MOLLY ALREADY LOST HER LICENSE. DON'T LET HER TAKE YOURS TOO.

When you drive with MDMA, you can also be
driving with confusion, severe anxiety, and
decreased motor skills.



DON'T DRIVE WITH MOLLY

Taking any drug can impair your driving skills.
Never drive while on medication or drugs.
Be the DUDE!

